


These instructions are provided for your safety in order to prevent the risk of Fire, Electric shock or Injury. Please retain for future reference. When fitting is in operation, some parts may become hot; take care when using/handling.

- Ensure the lamp type and max wattage is followed - do not exceed. Take care not to overtighten lamp.
- Do not touch the lamp or lamp holder while in operation, as both may become hot.
- Turn off and unplug fitting, leaving lamp to cool before changing lamp. Dispose of old lamps carefully.
- Adjust light fitting only when power to the fitting is off and has been left to cool.
- Never leave a fitting without a lamp in position.
- Keep light fitting away from combustible materials such as soft furnishings.
- Ensure children do not play with the light fitting.
- Ensure the light is positioned on a solid, level and non-slip surface and make sure the position of the cable does not pose a trip hazard.
- If the external flexible cable or cord of this luminaire is damaged, it shall exclusively be replaced by the manufacturer or his service agent, or a similar qualified person, in order to avoid a hazard.
- For use in a dry, indoor environment only. Ensure the fitting does not come into contact with any liquids.

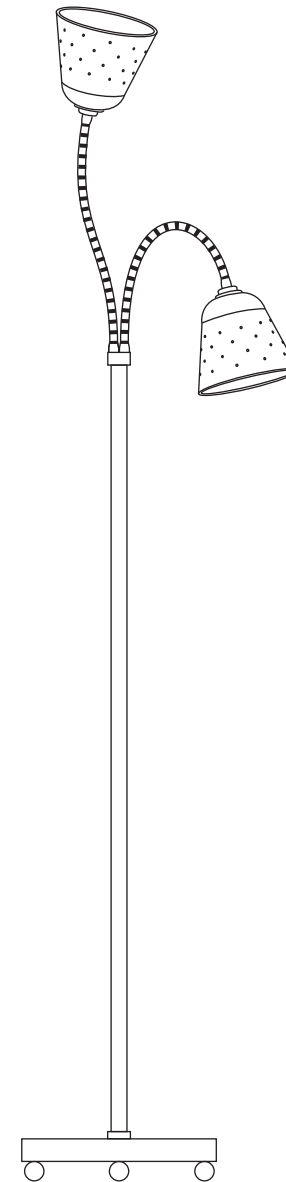
Cleaning & Maintenance

All brass components can be cleaned with a metal polish to remove tarnishing with the exception of the flexible arm. **Do not use polishes or abrasives on the flexible arm as this may compromise the fittings ability to maintain its shade position.** Bone china can be cleaned by hand, with a soft damp cloth with a diluted, mild detergent (nonabrasive) if necessary. The painted metalwork can be cleaned with a soft dry cloth. Switch off power to the fitting before cleaning.

 When handling the light, always support from the stem - do not lift from the bone china shade.

Established in 1990, Original BTC manufactures relaxed, familiar lighting for traditional and contemporary homes.



All products are hand-assembled in Oxfordshire from high quality components, produced in the UK.



Alma Floor Light

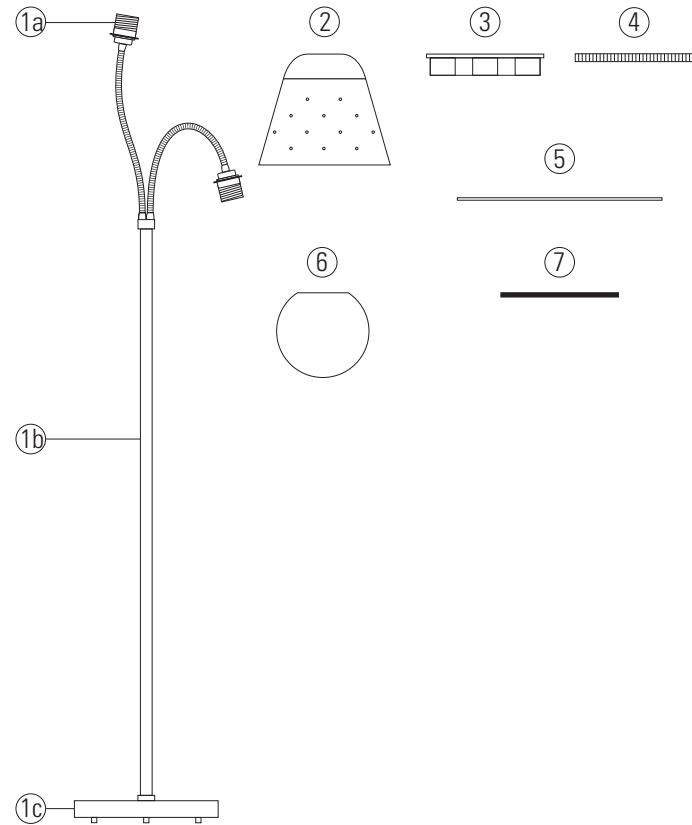
| 230V AC 50Hz | IP20 |

- FF701N Alma Floor Light, Natural
- FF701R Alma Floor Light, Coral
- FF701G Alma Floor Light, Seaweed

LAMP GUIDANCE : NB lamp not included			
BASE	SHAPE	TYPE	WATTAGE*
 E27	 GLS	LED	6W (recommended) x2
		Incandescent	40W Max x2

* Wattage value provided as a guide to suitable lamps. Lower wattage than stated may be used. 2700K (warm white) recommended.

Contents



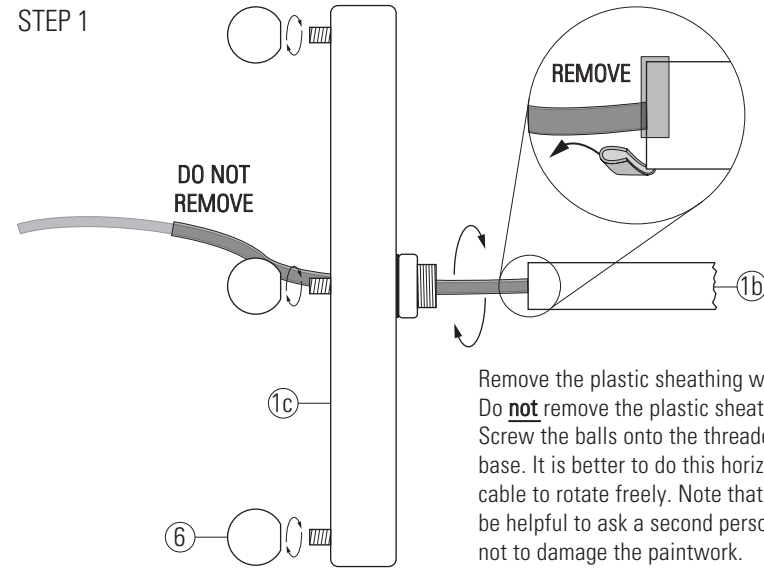
Contents

- 1 Main body
- 1a Lampholder
- 1b Stem
- 1c Base
- 2 Shade (x2)
- 3 Plastic shade ring (x2)
- 4 Brass shade ring (x6)
- 5 Brass shade disc (x2)
- 6 Brass ball feet (x4)
- 7 Rubber gasket (x2)

PLEASE READ THE INSTRUCTIONS ON THE REVERSE BEFORE YOU ASSEMBLE & USE YOUR LIGHT

Assembly Diagrams & Instructions

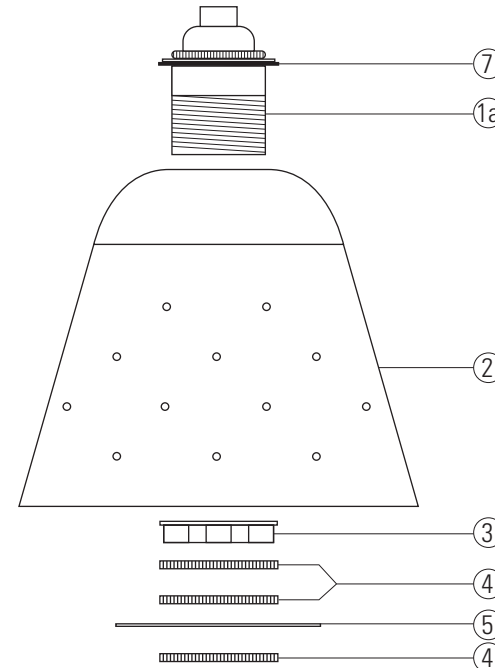
STEP 1



Remove the plastic sheathing which protects the end of the stem. Do **not** remove the plastic sheathing which protects the cable. Screw the balls onto the threaded stems. Screw the stem on to the base. It is better to do this horizontally (i.e. on its side) to allow the cable to rotate freely. Note that the fitting is very heavy, so it may be helpful to ask a second person to assist in this task. Take care not to damage the paintwork.

STEP 2

Assemble the shades as shown below. The plastic shade ring is a spacer and is held in place using the first brass shade ring. The brass shade disc is held in position by the remaining two brass shade rings.



STEP 3 (OPTIONAL)

The floor balls can be adjusted to ensure the product remains level on uneven surfaces, as shown below:

