

These instructions are provided for your safety in order to prevent the risk of Fire, Electric shock or Injury. It is vitally important that they are read in their entirety before installing your fitting. Please retain for future reference.

1. If you are in any doubt consult a qualified electrician as to the installation of the fitting. Install in accordance with current IEE wiring regulations. It is recommended that this fitting is installed by a qualified electrician.
2. Ensure that the electrical supply is OFF. Disconnect the electrical supply at the fuse-board.
3. If removing an existing fitting first, note all wiring connections: record which of the house wires is connected to the live, neutral and earth terminals.
4. Carefully identify where the supply cable is (and check there are no other cables in the area) to avoid damage to concealed wiring during installation.
5. Position the light where desired ensuring that there is suitable support adjacent to where you will connect to the house supply and mark position of fixing holes, before drilling appropriate holes as below.
6.
  - a. Brick or masonry: Drill holes into which the wall plugs tightly fit, then insert wall plugs.
  - b. Wood: No hole necessary (unless small pilot hole required), screws can be screwed directly into the timber.
  - c. Plaster/Cavity: Special cavity wall fittings are required, rather than provided fixings. These are widely available from good hardware or DIY store and should come with their own instructions that must be followed. It may be easier to relocate the fitting so that you screw directly into a timber joist or beam.
7. Support the fitting so that no strain is applied to the wiring when making the electrical connections. If necessary get a colleague to help.
8. Electrical connection: This fitting is low voltage, requiring no Earth connection. The fitting MUST be connected to a 12V constant voltage LED driver when installing on a mains voltage (230V) circuit:
  - 1 - Connect the positive '+' lead (black & white or red) from the LED module to the positive lead (red) of the driver output using a 2-way WAGO connector.
  - 2 - Connect the negative '-' lead (black) from the LED module to the negative lead (black) on the driver output using a 2-way WAGO connector.
  - 3 - Connect the switched live conductor (normally brown) from your mains supply to the live (brown) lead of the driver input using a 2-way WAGO connector.
  - 4 - Connect the neutral conductor of your house wiring (normally blue) to the neutral (blue) lead of the driver input using a 2-way WAGO connector.
9. To maintain the IP rating of this fitting, you must ensure that the electrical connection has suitable protection from water ingress, housing the connection in an IP rated junction box and sealing the backplate with silicone.
10. Ensure that all electrical connections are tight, with no loose strands of wire left out of the connectors, no wires are trapped behind or within the fitting and complete the installation, screwing the fitting to the mounting surface.
11. Switch on at the fuse-board. Your light fitting is now ready for use.

### Other Important Information

Switch off at mains before changing lamp(s). Never fit a lamp of greater wattage than recommended. Ensure children do not play with the light fitting. Dispose of old lamps carefully. Never leave a fitting without a lamp in position (or someone can accidentally touch the contacts). Adjust fitting only when power to the fitting is off and has been left to cool. If the electrical flex or electrical components become damaged at any point, power to the fitting should be disconnected immediately and not operated until the damaged parts are fixed/replaced.

### Cleaning and Maintenance

Metal finishes should only be cleaned with a soft, dry cloth. Do not use polishes or abrasives. Glass can be cleaned by hand, using a soft damp cloth with a diluted mild detergent (nonabrasive) or suitable glass cleaner if necessary. Switch off power to the fitting before cleaning. Spare parts are available for this product, please contact us on the details below.

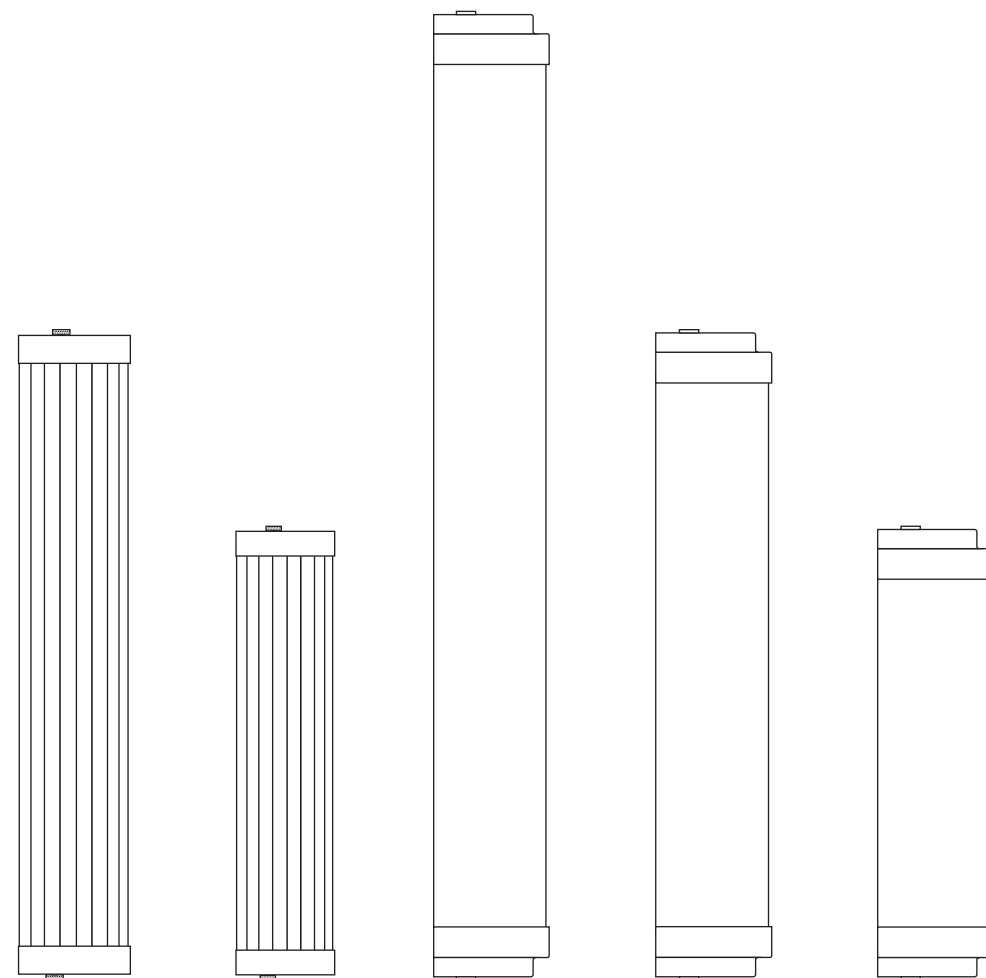
Established in 1990, Original BTC manufactures relaxed, familiar lighting for traditional and contemporary homes.

All products are hand-assembled in Oxford from high quality components, produced in the UK.

ORIGINALBTC.COM

+44 (0)1993 882 251

UNIT 21 / 22 AVENUE ONE, STATION LANE, WITNEY, OX28 4XZ, ENGLAND



7212/40

7212/27

7218/60

7218/40

7218/27

# Pillar & Cabin LED Wall Light

| 12V DC | IP44 |

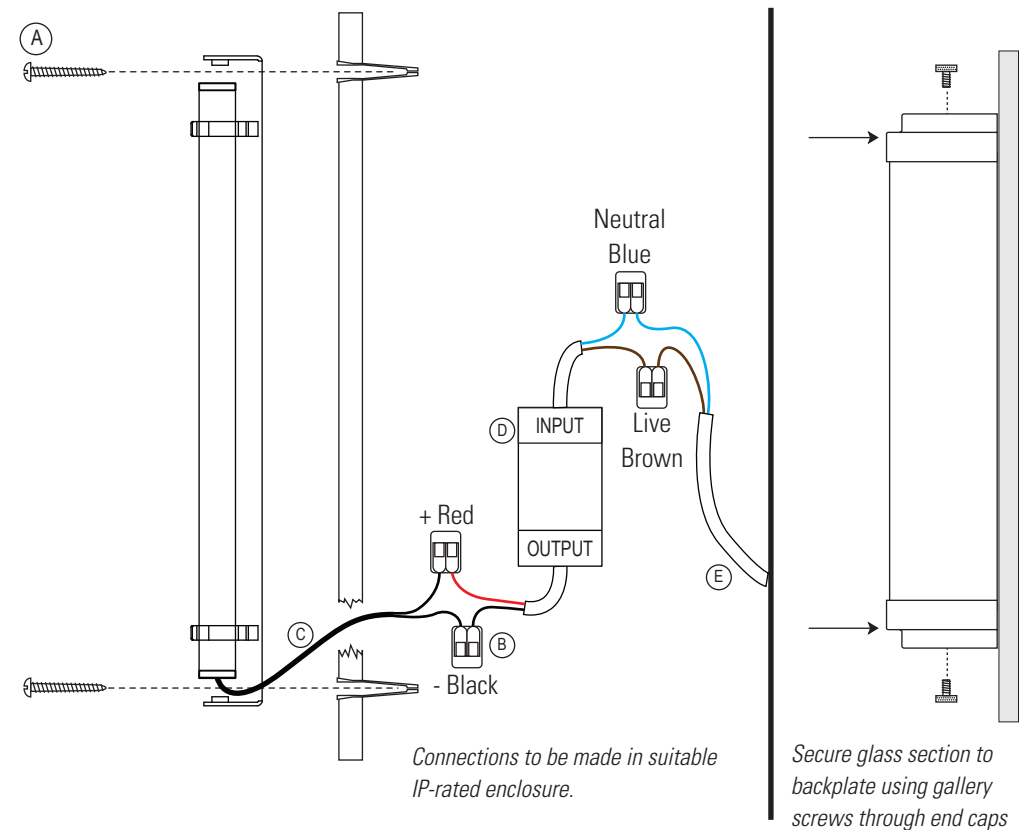
## Installation and Assembly Instructions

LAMP GUIDANCE		
MODEL	TYPE	WATTAGE
7212/40	LED	4.5W
7212/27	LED	2.5W
7218/60	LED	7W
7218/40	LED	4.5W
7218/27	LED	2.5W

Integral LED light source. DO NOT ATTEMPT TO REPLACE LAMP. In case of lamp failure contact original point of purchase.

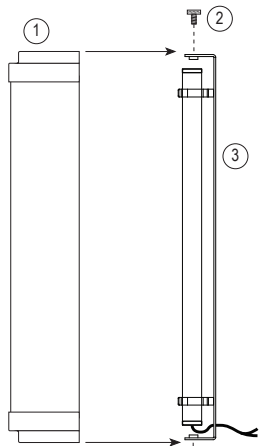
- The fitting requires a 12V constant voltage driver (supplied), to be connected when installing on a mains voltage circuit- **DO NOT** connect this fitting directly to a mains voltage circuit.
- Fitting is dimmable and is supplied with a TRIAC dimming leading edge driver.
- Remove the glass section of the pillar light from the back plate by unscrewing the gallery screws.
- Follow the instructions overleaf to install the fitting. The fitting must be connected to a 12V LED driver. The driver can be installed up to 10m from the fitting- providing suitable wiring and enclosure are used for the installation requirements.
- Replace the glass section of the Pillar/Cabin light, using the gallery screws to secure it to the backplate.
- Ensure the connections are made in a suitable IP-rated enclosure.

## Installation Diagram

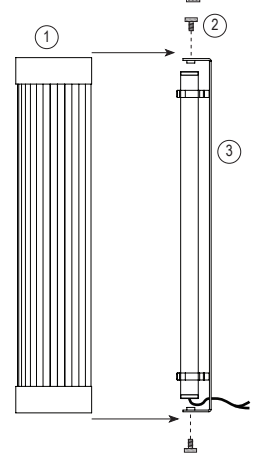


Key	
A	Fixing Screws
B	WAGO
C	12V Supply
D	12V Led Driver (in remote location)
E	Main Supply

7218



7212



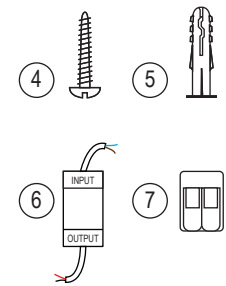
### Contents

- 1 - 7212 Front / 7218 Front
- 2 - 2 x Gallery screws
- 3 - Backplate/LED module
- 4 - 4 x fixing screws
- 5 - 4 x rawl plugs
- 6 - 12V dimmable LED driver
- 7 - 4 x 2-Way WAGO

### Required for Installation

- Screwdriver, flat-head
- Small screwdriver, flat-head
- Drill (if holes are required)
- Suitable IP-rated enclosure.

Gallery screws secure end caps of light to backplate. Remove for installation.



PLEASE READ THE INSTRUCTIONS ON THE REVERSE BEFORE YOU BEGIN INSTALLING YOUR LIGHT